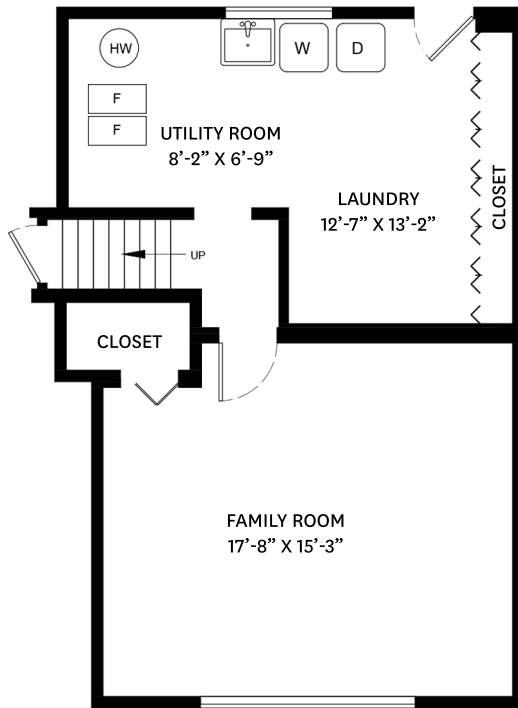
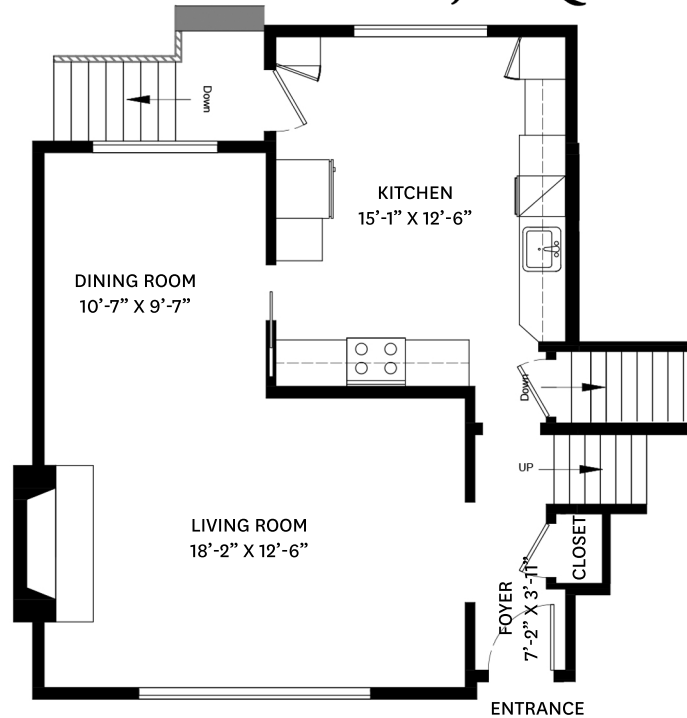


9611 WILLIAMS ROAD, RICHMOND, BC

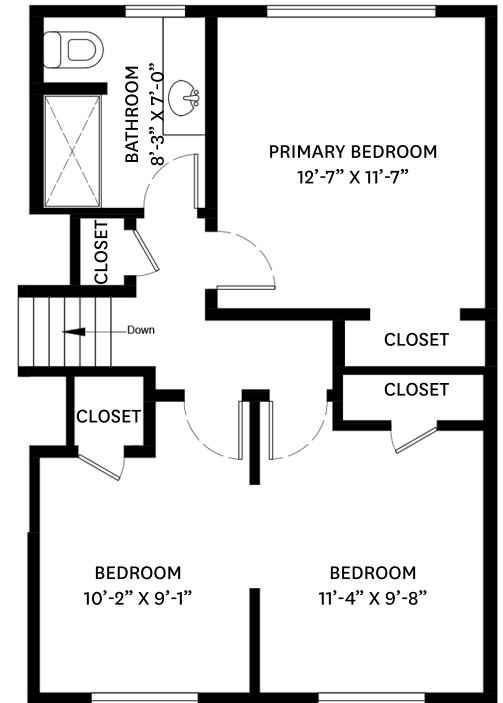
LOWER FLOOR TOTAL: 593 SQ.FT.
 MAIN FLOOR TOTAL: 633 SQ.FT.
 UPPER FLOOR TOTAL: 595 SQ.FT.
TOTAL: 1,821 SQ.FT.



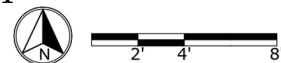
LOWER FLOOR PLAN
 Ceiling Height: 7'-7"



MAIN FLOOR PLAN
 Ceiling Height: 8'-1"



UPPER FLOOR PLAN
 Ceiling Height: 8'-1"



WestCoast Realty™

Corey Zach PREC*
 604.551.8547
 corey@coreyzach.com

floor plan designed by
 ishot.ca Enterprises Inc.
 604-368-7979
<http://ishot.ca>

*PERSONAL REAL ESTATE CORPORATION. THE FLOOR PLAN ILLUSTRATION IS NOT SUITABLE FOR CONSTRUCTION/ARCHITECTURAL PURPOSES. MEASUREMENTS ARE APPROXIMATE AND MAY NOT BE TO SCALE. E&O INSURED.